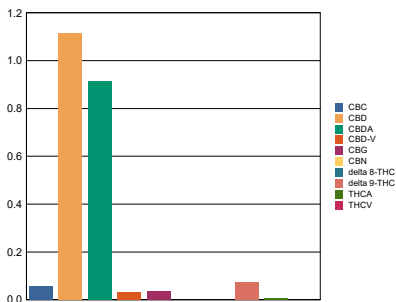


| Sample Information | | | | RS (GCMS-MS) | ppm | RL | Terpenes (HPLC) | mg/mL | % |
|---------------------------|---------------------|---------|-------|----------------------|-----|----|-----------------------------|-------|----|
| Sample Identification | Tanasi 600mg Citrus | | | Compound | | | Compound | | |
| Laboratory Number | 1910122-06 | | | Acetone | NT | NT | alpha-Bisabolol | NT | NT |
| Batch Number | | | | Acetonitrile | NT | NT | (-)-Borneol and (+)-Borneol | NT | NT |
| Matrix | Plant Oil | | | Benzene | NT | NT | Camphene | NT | NT |
| Cannabinoid (HPLC) | | | | | | | Camphor | NT | NT |
| | mg/mL | mg/unit | % | n-Butane | NT | NT | beta-Caryophyllene | NT | NT |
| Compound | | | | Carbon Tetrachloride | NT | NT | trans-Caryophyllene | NT | NT |
| THCA | 0.087 | 2.60 | 0.009 | Chloroform | NT | NT | Caryophyllene Oxide | NT | NT |
| delta 9-THC | 0.732 | 22.0 | 0.07 | 1,2-Dichloroethane | NT | NT | alpha-Cedrene | NT | NT |
| delta 8-THC | ND | ND | ND | Ethanol | NT | NT | Cedrol | NT | NT |
| THCV | ND | ND | ND | Ethyl acetate | NT | NT | Endo-fenchyl Alcohol | NT | NT |
| CBD | 11.1 | 334 | 1.11 | Ethylene oxide | NT | NT | Eucalyptol | NT | NT |
| CBD-V | 0.341 | 10.2 | 0.03 | n-Heptane | NT | NT | Fenchone | NT | NT |
| CBN | ND | ND | ND | n-Hexane | NT | NT | Geraniol | NT | NT |
| CBG | 0.383 | 11.5 | 0.04 | iso-Butane | NT | NT | Geranyl acetate | NT | NT |
| CBC | 0.583 | 17.5 | 0.06 | iso-Pentane | NT | NT | Guaiol | NT | NT |
| Cannabinoids Total | | | | Methylene Chloride | NT | NT | Hexahydrothymol | NT | NT |
| Max Active THC | 0.81 | 24.28 | 0.08 | n-Pentane | NT | NT | alpha-Humulene | NT | NT |
| Max Active CBD | 19.10 | 574.00 | 1.91 | Propane | NT | NT | Isoborneol | NT | NT |
| T.Active Cannabinoids | 12.80 | 385.00 | 1.28 | 2-Propanol (IPA) | NT | NT | Isopulegol | NT | NT |
| Total Cannabinoids | 22.40 | 672.00 | 2.24 | Tetrahydrofuran | NT | NT | Limonene | NT | NT |
| Max Active Ratios | | | | Toluene | NT | NT | Linalool | NT | NT |
| 24.76 : 1 CBD to THC | | | | Trichloroethane | NT | NT | p-Mentha-1,5-diene | NT | NT |
| 0.04 : 1 THC to CBD | | | | o-xylene | NT | NT | beta-Myrcene | NT | NT |
| | | | | Xylenes (m,p) | NT | NT | trans-Nerolidol | NT | NT |
| | | | | | | | Ocimene Isomer 1 | NT | NT |
| | | | | | | | alpha-Pinene | NT | NT |
| | | | | | | | beta-Pinene | NT | NT |
| | | | | | | | Pulegone | NT | NT |
| | | | | | | | Sabinene | NT | NT |
| | | | | | | | Sabinene Hydrate | NT | NT |
| | | | | | | | gamma-Terpinene | NT | NT |
| | | | | | | | alpha-Terpinene | NT | NT |
| | | | | | | | alpha-Terpineol | NT | NT |
| | | | | | | | 3-Carene | NT | NT |
| | | | | | | | Ocimene Isomer 2 | NT | NT |
| | | | | | | | gamma-Terpineol | NT | NT |
| | | | | | | | Terpinolene | NT | NT |
| | | | | | | | Valencene | NT | NT |
| | | | | | | | Nerol | NT | NT |
| | | | | | | | cis-Nerolidol | NT | NT |
| | | | | | | | Total Terpenes | NT | NT |

Cannabinoid (%)



Sample Image



| Metals | ppm | RL |
|-------------------------|-----|----|
| Compound | | |
| Arsenic | NT | NT |
| Cadmium | NT | NT |
| Mercury | NT | NT |
| Lead | NT | NT |
| Percent Moisture | | |
| NT % | | |
| Water Activity | | |
| NT | | |

RL = Reporting Limit
 NA = Not Applicable
 NT = Not Tested
 ND = Non Detected