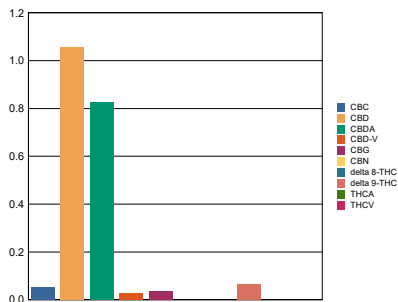


| Sample Information        |            |                       |      | RS (GCMS-MS)         |     |    | Terpenes (HPLC)             |       |    |
|---------------------------|------------|-----------------------|------|----------------------|-----|----|-----------------------------|-------|----|
| Sample Identification     |            | Tanasi 600mg Cinnamon |      | Compound             | ppm | RL | Compound                    | mg/mL | %  |
| Laboratory Number         | 1910122-07 |                       |      | Acetone              | NT  | NT | alpha-Bisabolol             | NT    | NT |
| Batch Number              |            |                       |      | Acetonitrile         | NT  | NT | (-)-Borneol and (+)-Borneol | NT    | NT |
| Matrix                    | Plant Oil  |                       |      | Benzene              | NT  | NT | Camphene                    | NT    | NT |
| <b>Cannabinoid (HPLC)</b> |            |                       |      | n-Butane             | NT  | NT | Camphor                     | NT    | NT |
| Compound                  | mg/mL      | mg/unit               | %    | Carbon Tetrachloride | NT  | NT | beta-Caryophyllene          | NT    | NT |
| THCA                      | ND         | ND                    | ND   | Chloroform           | NT  | NT | trans-Caryophyllene         | NT    | NT |
| delta 9-THC               | 0.668      | 20.0                  | 0.07 | 1,2-Dichloroethane   | NT  | NT | Caryophyllene Oxide         | NT    | NT |
| delta 8-THC               | ND         | ND                    | ND   | Ethanol              | NT  | NT | alpha-Cedrene               | NT    | NT |
| THCV                      | ND         | ND                    | ND   | Ethyl acetate        | NT  | NT | Cedrol                      | NT    | NT |
| CBD                       | 10.5       | 316                   | 1.05 | Ethylene oxide       | NT  | NT | Endo-fenchyl Alcohol        | NT    | NT |
| CBD-V                     | 0.260      | 7.81                  | 0.03 | n-Heptane            | NT  | NT | Eucalyptol                  | NT    | NT |
| CBN                       | ND         | ND                    | ND   | n-Hexane             | NT  | NT | Fenchone                    | NT    | NT |
| CBG                       | 0.372      | 11.2                  | 0.04 | iso-Butane           | NT  | NT | Geraniol                    | NT    | NT |
| CBC                       | 0.540      | 16.2                  | 0.05 | iso-Pentane          | NT  | NT | Geranyl acetate             | NT    | NT |
| <b>Cannabinoids Total</b> |            |                       |      | Methylene Chloride   | NT  | NT | Guaiol                      | NT    | NT |
| Max Active THC            | 0.67       | 20.00                 | 0.08 | n-Pentane            | NT  | NT | Hexahydrothymol             | NT    | NT |
| Max Active CBD            | 17.75      | 534.00                | 1.78 | Propane              | NT  | NT | alpha-Humulene              | NT    | NT |
| T.Active Cannabinoids     | 12.10      | 364.00                | 1.21 | 2-Propanol (IPA)     | NT  | NT | Isoborneol                  | NT    | NT |
| Total Cannabinoids        | 20.70      | 620.00                | 2.07 | Tetrahydrofuran      | NT  | NT | Isopulegol                  | NT    | NT |
| <b>Max Active Ratios</b>  |            |                       |      | Toluene              | NT  | NT | Limonene                    | NT    | NT |
| 25.69 : 1 CBD to THC      |            |                       |      | Trichloroethane      | NT  | NT | Linalool                    | NT    | NT |
| 0.04 : 1 THC to CBD       |            |                       |      | o-xylene             | NT  | NT | p-Mentha-1,5-diene          | NT    | NT |
|                           |            |                       |      | Xylenes (m,p)        | NT  | NT | beta-Myrcene                | NT    | NT |
|                           |            |                       |      |                      |     |    | trans-Nerolidol             | NT    | NT |
|                           |            |                       |      |                      |     |    | Ocimene Isomer 1            | NT    | NT |
|                           |            |                       |      |                      |     |    | alpha-Pinene                | NT    | NT |
|                           |            |                       |      |                      |     |    | beta-Pinene                 | NT    | NT |
|                           |            |                       |      |                      |     |    | Pulegone                    | NT    | NT |
|                           |            |                       |      |                      |     |    | Sabinene                    | NT    | NT |
|                           |            |                       |      |                      |     |    | Sabinene Hydrate            | NT    | NT |
|                           |            |                       |      |                      |     |    | gamma-Terpinene             | NT    | NT |
|                           |            |                       |      |                      |     |    | alpha-Terpinene             | NT    | NT |
|                           |            |                       |      |                      |     |    | alpha-Terpeneol             | NT    | NT |
|                           |            |                       |      |                      |     |    | 3-Carene                    | NT    | NT |
|                           |            |                       |      |                      |     |    | Ocimene Isomer 2            | NT    | NT |
|                           |            |                       |      |                      |     |    | gamma-Terpinol              | NT    | NT |
|                           |            |                       |      |                      |     |    | Terpinolene                 | NT    | NT |
|                           |            |                       |      |                      |     |    | Valencene                   | NT    | NT |
|                           |            |                       |      |                      |     |    | Nerol                       | NT    | NT |
|                           |            |                       |      |                      |     |    | cis-Nerolidol               | NT    | NT |
|                           |            |                       |      |                      |     |    | Total Terpenes              | NT    | NT |

Cannabinoid (%)



| Metals                  | ppm | RL |
|-------------------------|-----|----|
| <b>Compound</b>         |     |    |
| Arsenic                 | NT  | NT |
| Cadmium                 | NT  | NT |
| Mercury                 | NT  | NT |
| Lead                    | NT  | NT |
| <b>Percent Moisture</b> |     |    |
| NT %                    |     |    |
| <b>Water Activity</b>   |     |    |
| NT                      |     |    |

RL = Reporting Limit  
 NA = Not Applicable  
 NT = Not Tested  
 ND = Non Detected